



Enhance the Management of  
**Chemical Information**

## Incorporate CleanChain and ZDHC Gateway into your manufacturing procedures

The urgency of chemical management is escalating, prompting companies to face mounting inquiries regarding chemical usage in textile and manufacturing operations. To effectively monitor and communicate progress on chemical commitments, extensive data collection and tracking are imperative, demanding significant resources.

As a trusted ZDHC solution provider, CleanChain is approved to assist in generating and managing your monthly InCheck reports for chemical management and compliance.

To get started, you'll need to register with CleanChain. Once registered, you can easily generate your InCheck reports, which can then be downloaded and shared with your customers through CleanChain or the ZDHC Gateway. Please note that both subscriptions and registrations are necessary.

CleanChain and the ZDHC Gateway work together to make managing chemical data easy. These tools help you show your efforts in reducing hazardous chemicals, making the process efficient and simple.

## ZDHC Gateway establishes guidelines for the safe utilization of chemicals and sets limits for wastewater discharge



### Chemical Module

The CleanChain Chemical Module and InCheck are interconnected resources for chemical manufacturers, textile suppliers, and brands. By registering with CleanChain, you can generate your InCheck reports, which verify product information to ensure compliance with ZDHC's Manufacturing Restricted Substances List (MRSL). This integration helps you identify safer chemicals and make informed decisions, promoting the use of sustainable practices in your supply chain.



### Performance InCheck Report

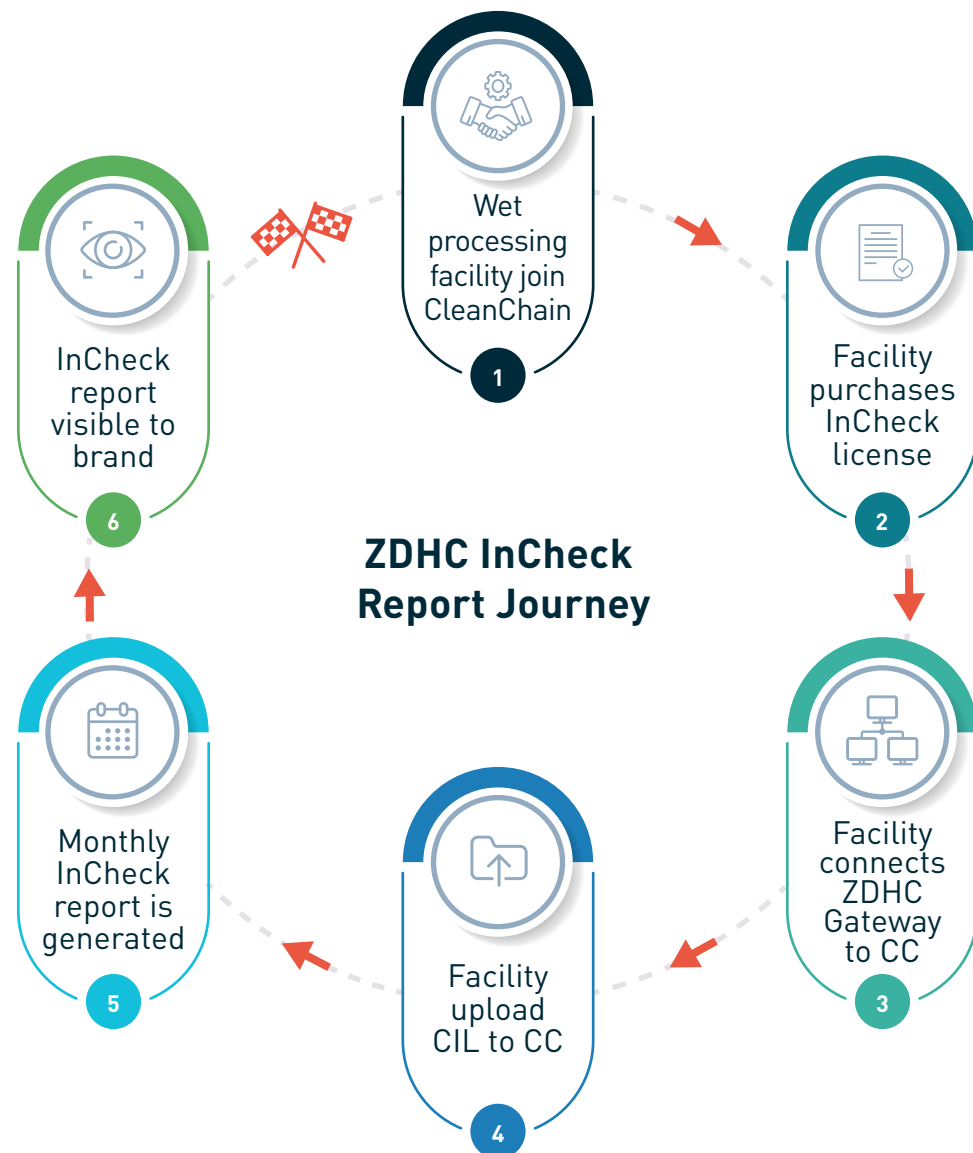
The Performance InCheck Report summarizes and evaluates the chemicals used at your facility to ensure they meet ZDHC's MRSL standards. Available for download from CleanChain, this essential report for the textile, leather, and footwear industries requires the CleanChain chemical module. Recognized by leading brands, it can be shared with all customers.



### Wastewater Module

Our Wastewater Module compiles industry guidelines for discharge criteria to ensure compliance and environmental responsibility. The ZDHC ClearStream Report, based on validated wastewater test results, documents performance and identifies areas for improvement. Suppliers cannot upload the ClearStream report directly; however, CleanChain supports this process through our partners. These partners will perform wastewater testing at your facility.

## CleanChain facilitates collaboration between brands and manufacturing facilities



### Key features include:

#### Inventory Management:

Monitor chemical inventories, deliveries, usage, and outputs, including wastewater data.

#### Compliance Support:

Access the ZDHC InCheck Report, product library, and compliance criteria.

#### Extensive Library:

Maintain a thorough inventory with ZDHC Gateway and non-ZDHC chemical products.

#### Communication & Collaboration:

Centralize communication between suppliers and brands by sharing questionnaires, assessments, corrective actions, and lab data.

[Book your demo](#)